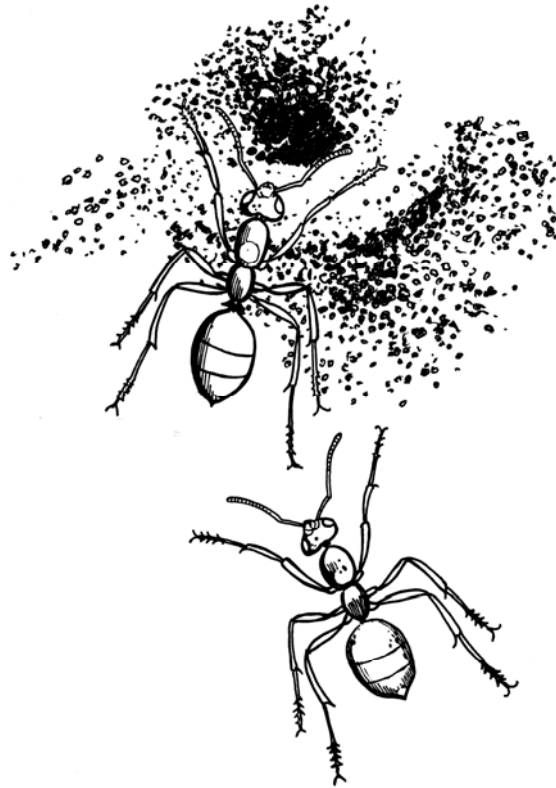


Marvel

Believe

Care

Activity Book Level Two



Puzzles! Art! Codes!

*Learn what the Bible teaches
about caring for God's creation.*

by Jennifer Bryson, illustrated by Steve Artley

FREE

Marvel

Believe

Care

Activity Book Level Two

PAGE	THEME	VERSE(S)	PUZZLE
1	Marvel	Job 12:7-10	Word Scramble
2	Marvel	Proverbs 6:6	Drawing
3	Marvel	Psalms 104:16-24	Letter-Number Chart
4	Believe	Proverbs 8:22-32	Who am I?
5	Believe	Psalms 24:1	Grid Word-Find
6	Believe	Romans 1:20	Criss-cross
7	Care	Ezekiel 34:18	Maze
8	Care	Genesis 2:15	Crack the Code
9	Care	Genesis 9:8-10	Find the Missing Word
10	Marvel, Believe, Care		Match the Pairs
11	Marvel, Believe, Care		Quiz
12	Marvel, Believe, Care		Word Search

The answer key to these puzzles is available at MarvelBelieveCare.org.

Electronic versions of this book are available to download for free from www.MarvelBelieveCare.org. These may be printed and distributed for free.



Selling this book is prohibited and is a violation of the copyright. However, small donations may be accepted by local groups solely for the purpose of recovering printing costs.

Scripture Quotes

Scripture taken from the HOLY BIBLE, NEW INTERNATIONAL VERSION®. NIV®. Copyright© 1973, 1978, 1984 by International Bible Society. Used by permission of Zondervan. All rights reserved.

Illustrations*

©2008 • Steve Artley • ALL RIGHTS RESERVED
The illustrations contained in this book may not be duplicated in part or in whole without permission in writing from the Marvel, Believe, Care organization.
* Exception: graphics page 7 are Microsoft Clip Art.

Marvel, Believe, Care Activity Book Level Two, copyright 2008, Jennifer Bryson

This book is not to be sold.

WORD SCRAMBLE

Unscramble the letters of each word to show a Bible verse.

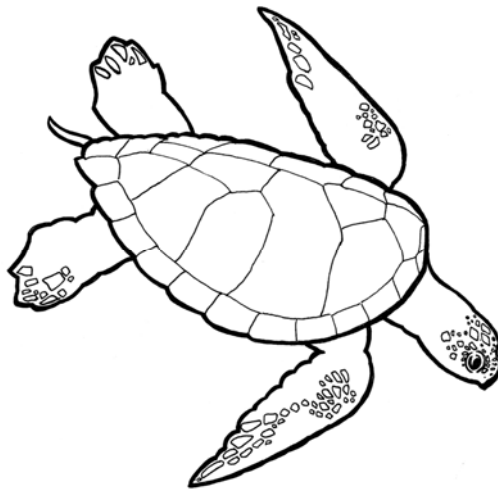
S E T L N I O T

I H T S , O B J ;

P T S O N D A

S C N O I R E D

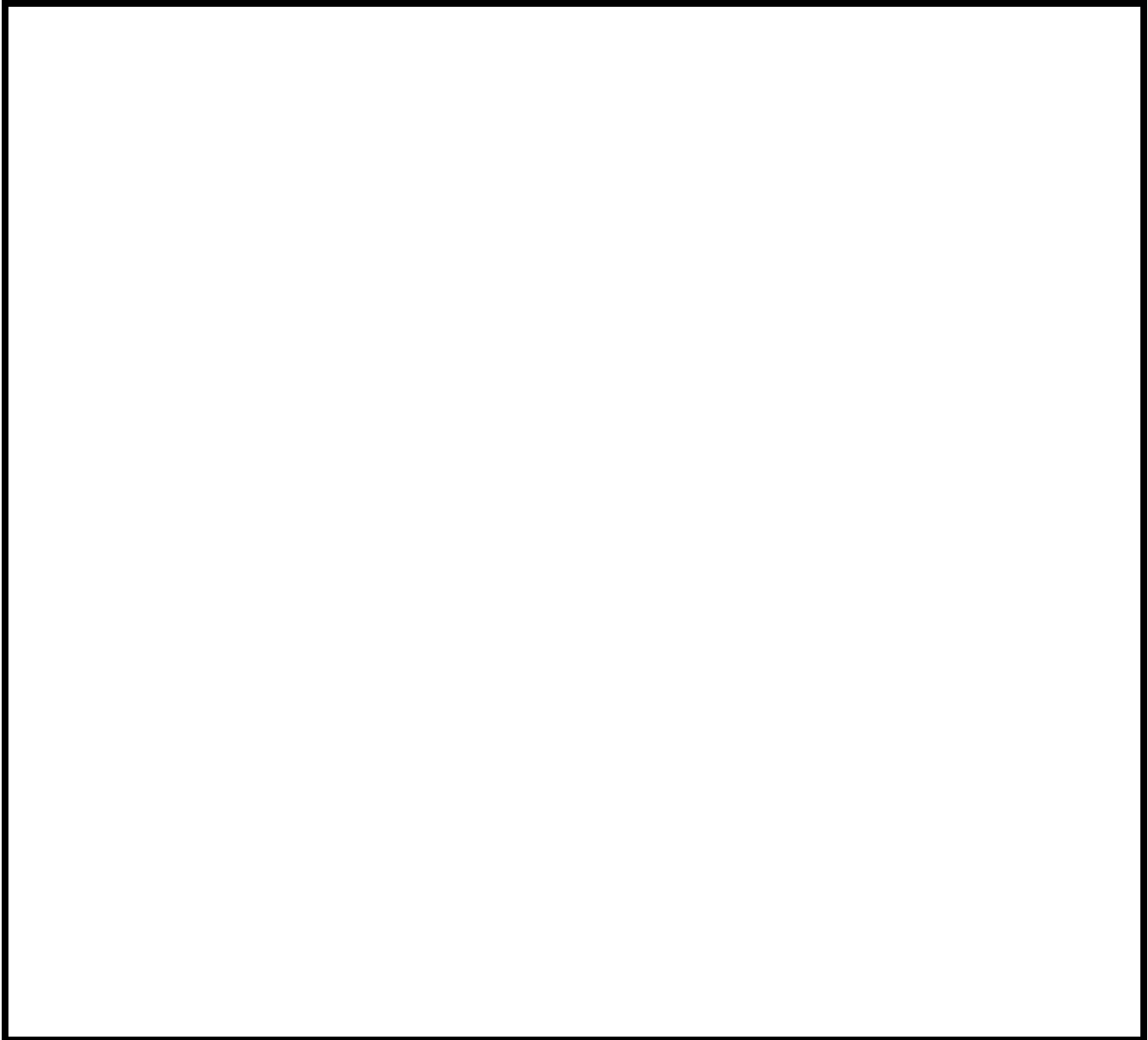
S O D , G D S R E O N W .



Hint:
Job
37:14

DRAW

Draw an ant. How many legs does an ant have? How many sections are in its body? What sticks out from its head?



*Go to the ant, you sluggard;
consider its ways and be wise!*
(Proverbs 6:6)

Hint:
See ant
page 11.

LETTER-NUMBER CHART

Use the alpha-numeric hints to complete the missing line below.

W	A	T	E	R	S		F	I	E	L	D
9	6	5	13	16	8		17	7	13	10	11

H	I	G	H		M	O	U	N	T	A	I	N	S
15	7	16	15		1	2	3	4	5	6	7	4	8

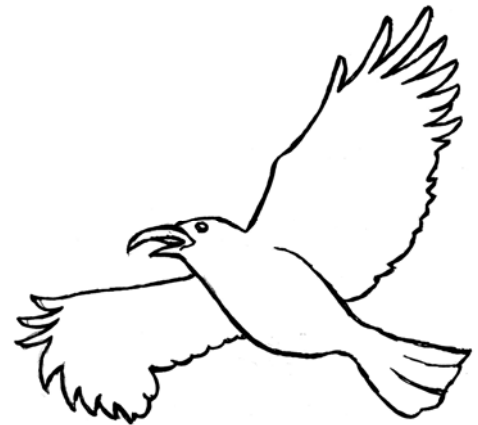
W	I	L	D		D	O	N	K	E	Y	S
9	7	10	11		11	2	4	12	13	14	8

...springs ...give water to all the beasts of the field; the wild donkeys quench their thirst.

The birds of the air nest by the waters; they sing among the branches...

The high mountains belong to the wild goats; the crags are a refuge for the coney.

How many are your works O LORD!



<u>7</u>	<u>4</u>		<u>9</u>	<u>7</u>	<u>8</u>	<u>11</u>	<u>2</u>	<u>1</u>		<u>14</u>	<u>2</u>	<u>3</u>
<u>1</u>	<u>6</u>	<u>11</u>	<u>13</u>		<u>5</u>	<u>15</u>	<u>13</u>	<u>1</u>		<u>6</u>	<u>10</u>	<u>10</u>

The earth is full of your creatures.

Hint:
Psalm 104

WHO AM I?

"I was appointed from eternity, from the beginning, before the world began."

"The LORD brought me forth as the first of his works..."

"I was the craftsman at his side."

"I was there when he set the heavens in place, when he marked out the horizon on the face of the deep."

"I was filled with delight day after day, rejoicing always in his presence, rejoicing in his whole world and delighting in mankind."

"Blessed are those who keep my ways."

I AM _____.

Hint:
Proverbs 8

GRID WORD-FIND

Find the missing words by coloring in only the boxes with an x.

For example:

b	w	r
n	x	g
k	x	s
o	x	b



*The earth is the LORD's, and _____ in it,
the world, and _____ who live in it;*

d	e	g	v	h	b	q	w	e	c	v	b	v	m	u	o	f	e	y	c	s	w	b	s	g	i	l	p
x	x	x	e	x	h	t	r	c	x	s	a	x	m	x	x	x	o	x	x	n	u	x	l	a	y	x	m
x	w	r	i	w	x	m	p	d	k	b	x	b	d	x	o	n	m	x	p	x	i	s	x	v	x	v	z
x	x	n	m	y	p	x	y	k	v	x	i	q	p	x	x	v	v	x	x	y	o	g	b	x	p	x	x
x	c	j	k	s	f	z	x	y	x	k	p	v	a	x	l	u	m	x	x	e	h	z	h	x	a	b	e
x	x	x	s	j	k	r	o	x	h	l	a	j	o	x	x	x	d	x	y	x	f	p	o	x	d	e	l
k	g	>	g	h	e	z	s	m	o	h	e	j	m	u	v	s	a	w	r	i	c	m	q	w	e	t	w
u	o	f	e	j	r	m	u	v	g	q	w	e	c	v	b	y	t	o	n	m	y	y	c	s	w	y	p
x	x	x	x	x	v	x	h	z	x	c	x	x	x	x	m	x	h	t	l	x	q	t	x	x	l	g	
e	m	x	o	a	k	x	l	p	x	p	v	l	x	b	e	d	x	x	s	w	x	v	x	i	k	o	c
l	d	x	p	h	q	x	x	x	x	b	w	m	x	h	a	p	x	m	x	p	x	j	x	w	x	x	p
w	p	x	f	m	s	x	p	b	x	l	i	v	x	o	y	a	x	z	a	x	x	h	x	z	w	x	b
p	a	x	w	r	o	x	k	s	x	d	x	x	x	x	o	x	l	i	f	x	b	v	x	x	y	l	
z	v	m	u	f	e	j	m	u	v	a	w	r	i	c	m	p	d	k	g	>	g	h	z	s	m	p	d

q	w	e	c	v	b	x	y	t	o	n	m	y	x	e	c	v	b	x	y	c	s	w	y
p	y	a	g	>	x	v	x	y	v	l	d	o	x	l	k	j	h	x	v	e	j	m	u
b	>	y	p	x	m	s	l	x	z	>	p	h	x	w	y	>	o	x	t	o	n	m	q
l	r	q	x	x	x	x	x	x	w	a	m	x	p	y	a	g	x	q	w	e	c	v	
d	c	x	<	v	y	<	s	w	y	x	o	r	x	j	k	s	z	x	y	v	l	d	j
z	x	m	u	o	f	e	j	m	u	v	x	w	x	x	x	p	x	x	x	x	g	h	

Hint:
Psalm
24:1

CRISS-CROSS

*For ~~since~~ the creation of the world God's invisible qualities
 - his ~~eternal~~ power and divine nature - have been clearly
 _____n, being understood _____m _____h _____
 _____a _____b _____n _____m _____... (Romans 1:20)*

Complete the verse by inserting words from the verse above into the boxes below, from top to bottom. Use words only once. The words missing from the verse will appear in the grey boxes.

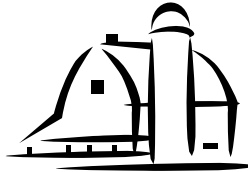
								o						
			s											
			i											
			n	.	.	.				m	/		h	
	e		c				r					r		n
			e											

									e					
									t					
						a			e					t
									r					
	a			/	b				n	/	m			
									a					
s									l				v	

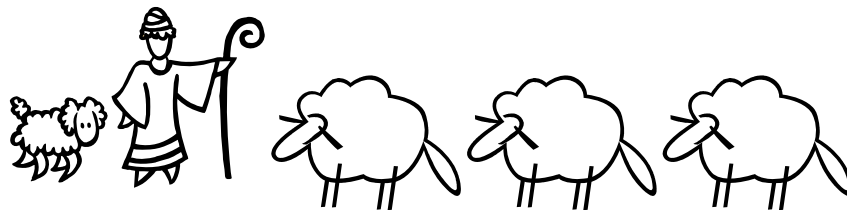
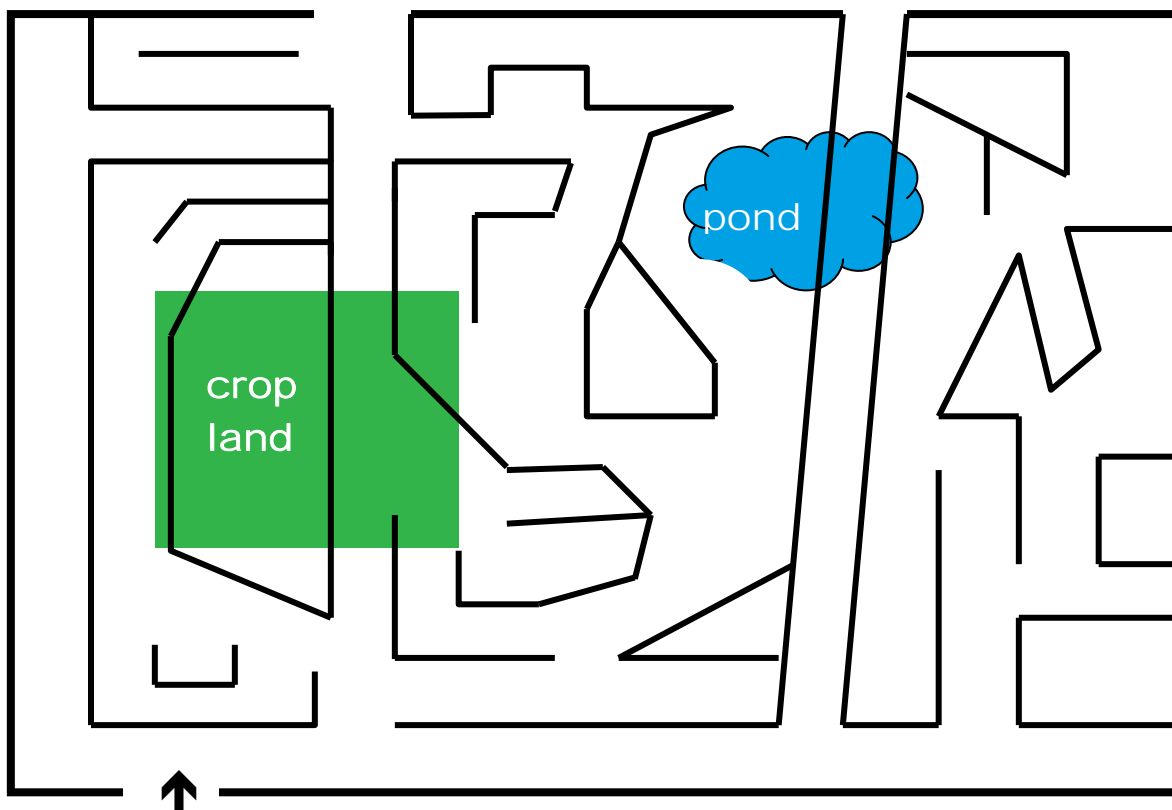
MAZE

Help the shepherd respect God's creation by moving his flock to shelter:

★ without
trampling
crop land



★ without
muddying
the water



*Is it not enough for you to feed on the good pasture?
Must you also trample the rest of your pasture with your feet?
Is it not enough for you to drink clear water?
Must you also muddy the rest with your feet? (Ezekiel 34:18)*

CRACK THE CODE

◆	{	&	%	=	◐	+	*	✱	○	>	★]
A	B	C	D	E	F	G	H	I	J	K	L	M
<	■	∞	□	@	△	#	▼	▽	●	✓	◇	}
N	O	P	Q	R	S	T	U	V	W	X	Y	Z

#	*	=		★	■	@	%		+	■	%	
#	■	■	>	#	*	=]	◆	<		
◆	<	%		∞	▼	#		*	✱]		✱ <
#	*	=		+	◆	@	%	=	<		■	◐
=	%	=	<	#	■			●	■	@	>	
✱	#		◆	<	%	#	◆	>	=			
&	◆	@	=		■	◐		✱	#			•

Hint:
Genesis
2:15

FIND THE MISSING WORD

Use the alpha-numeric chart to fill out the blanks below. Fill in the circles to complete the words, which are from the verses below. The letters in the circles will spell the words missing below.

1	2	3	4	5	6	7	8	9	10	11	12	13
A	B	C	D	E	F	G	H	I	J	K	L	M
14	15	16	17	18	19	20	21	22	23	24	25	26
N	O	P	Q	R	S	T	U	V	W	X	Y	Z



								○	—	—	—	—				
									1	18	20	8				
								○	—	—	—	—	—	—		
									12	9	5	19	20	15	3	11
—	—	—	—	—	—	—	—	○								
3	18	5	1	20	21	18										
								○	—	—						
									2	9	4	19				
								○	—	—						
									15	21						

*Then God said to Noah and to his sons with him:
"I now establish my covenant with you and with your
descendants after you and with _____ living creature
that was with you—the birds, the livestock and all the wild
animals, all those that came out of the ark with you—
_____ living creature on earth.*

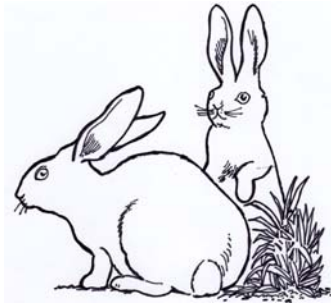
Hint:
Genesis
9:8-10

MATCH THE PAIRS

Draw a line to match each word on the left with a word of related meaning on the right.

For example:

Animal → Tree
Plant → Rabbit



Marvel

Concern

Marvel

Faith

Believe

Love

Believe

Amazement

Care

Creed

Care

Awe

QUIZ

The Lord put man in the Garden of Eden in order for man to _____.

Hint:
Genesis
2:15

- A. ignore it
- B. harm it
- C. work it and take care of it
- D. find a way to get out of it

After the flood, God made a covenant with _____.

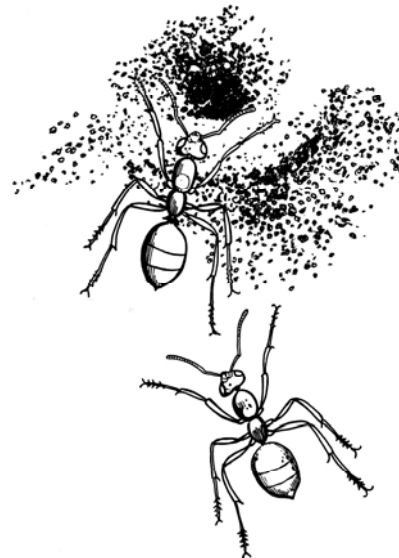
Hint:
Genesis
9:8-10

- A. no one
- B. the dove
- C. every living creature
- D. Noah only

Ants are _____ insects.

Hint:
Proverbs
6:6

- A. hard-working
- B. industrious
- C. diligent
- D. all of the above



A good man leaves _____ for his children's children.

Hint:
Proverbs
13:22a

- A. debt
- B. an inheritance
- C. air pollution
- D. nothing

WORD SEARCH

Find these words about creation below in the grid.
They are horizontal, vertical, and diagonal.

- | | | | |
|----------|-------------|--------|---------|
| AIR | EARTH | LAND | SABBATH |
| ANT | EDEN | LEAF | SEA |
| BELIEVE | FISH | MARVEL | SKY |
| BIRD | FLOCK | MOON | STAR |
| CARE | FLOWER | NATURE | SUN |
| COVENANT | GARDEN | NOAH | TREE |
| CREATOR | GENESIS | PLANT | WATER |
| CREATURE | INHERITANCE | RAVEN | WISDOM |
| DELIGHT | JOY | ROCK | WONDERS |

M	A	R	V	E	L	X	V	G	E	N	E	S	I	S
D	E	L	I	G	H	T	P	A	Q	U	Z	A	N	T
C	O	V	E	N	A	N	T	R	S	T	A	R	H	R
R	J	O	Y	Q	W	I	S	D	O	M	C	M	E	E
W	O	N	D	E	R	S	L	E	E	P	W	R	R	E
N	F	L	O	W	E	R	V	C	L	A	N	D	I	L
M	L	I	Z	C	F	I	O	R	R	O	C	K	T	A
J	O	D	S	B	E	L	I	E	V	E	N	O	A	H
T	C	O	L	H	S	E	T	A	C	I	Y	G	N	D
W	K	R	N	P	E	A	V	T	B	I	R	D	C	N
A	V	U	E	Q	A	R	Y	U	L	S	N	B	E	A
T	L	S	E	A	C	T	X	R	R	P	L	A	N	T
E	E	L	U	D	T	H	S	E	B	B	A	T	H	U
R	A	V	E	N	E	O	V	L	T	P	O	A	I	R
J	F	O	D	V	L	N	R	S	K	Y	C	A	R	E

*Tip: Use highlighter pens to mark the horizontal and vertical words.
Circle the diagonal words.*

MarvelBelieveCare.org
reusable grocery bags,
t-shirts, fleece tops,
& more available from Lands' End.

Help others learn about the importance of caring for God's creation by spreading the word about Marvel, Believe, Care.... and do it in style!



The Marvel, Believe, Care logo, shown above, is available in high-quality embroidery on many Lands' Ends Business Outfitters products.

You can get sturdy reusable grocery totes and reusable lunch bags featuring the Marvel, Believe, Care logo. Using these is a great way to show that God's creation is so wonderful it is worth caring for!

Also available are clothing items, such as t-shirts, polos, jackets, and fleece tops, as well as backpacks.

The Marvel, Believe, Care logo number at Lands' End is 0857855. (There is a small fee for adding the logo to each item).

If you would like to order just one item, that's fine. There is no minimum order required. Also, quantity discounts are available, so you can order Marvel, Believe, Care items for your whole church! See the Lands' End Business Outfitters website for details.

For clothing, backpacks, and lunch bags for children and teens, see the School Uniforms section of the Lands End website.

landsend.com/business

*What does the
Bible teach about
caring for God's creation?*

Explore at

MarvelBelieveCare.org

